

Welcome to Pinnacle, where neighborhood meets lifestyle. Pinnacle is a vibrant and growing Brighton community in Meridian, ID, offering an array of amenities and opportunities for residents.

With so many exciting things in the works, it's time for an update on the latest developments. Learn more about the Pinnacle lifestyle, what's new, and what's coming next for this exciting community in the heart of the SO|ME District, including the grand opening of the first neighborhood pool, the South Meridian Market, the new library and café, the upcoming amphitheater, Discovery Park, and how you can find your dream home in Pinnacle.

Pool Grand Opening



We're excited to announce the grand opening of Pinnacle's first neighborhood pool! Located in the southeast section of the Pinnacle community, this gorgeous 60 ft long pool features a 1.5 ft kiddie area for the little ones providing a safe and fun environment for young children, and allowing families to enjoy the pool together. The pool is also heated, ensuring a comfortable swim even on chilly mornings, and showers are available for residents to rinse off before and after their swim.

The pool also serves as a central gathering spot for neighbors to meet, socialize, and build stronger community bonds, fostering a lively and engaging neighborhood atmosphere.

And there's more to look forward to! A second pool in the northwest section of Pinnacle is currently in the planning stages, and we'll share more details as they become available.

South Meridian Market



Have you been to the [South Meridian Market](#) yet? The South Meridian Market is a fantastic place to connect with local small businesses, farmers, and entrepreneurs. Held every second Wednesday of the month April to October, 5 PM – 8 PM, the market offers a vibrant atmosphere with live music and entertainment. Located between the new Meridian library and the future amphitheater site at 1375 E. Phenomenal St, the market is a must-visit for discovering locally crafted and produced goods.

At Pinnacle, the health and safety of our vendors and market attendees are our top priority. Due to extreme weather conditions in May (high winds) and July (heat), we made the difficult decision to cancel those markets to ensure everyone's well-being. We're now looking forward to the August market and can't wait to see you there! Join us for a fantastic community experience with live music from Brooke Faulk and Donny Hurda.

Library & Café

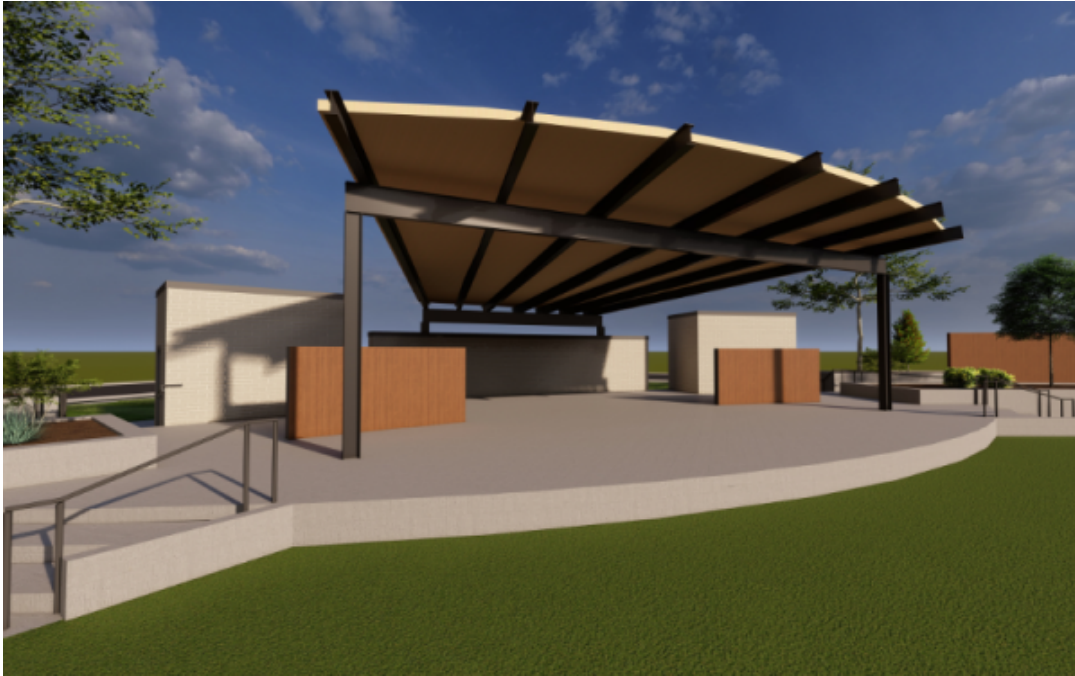


Scheduled to open in Fall 2024, the new [Pinnacle library branch](#) will serve as a central hub for the community. This state-of-the-art facility will offer a variety of features to meet the needs of all residents.

Highlights include a 24-hour access point for picking up requested materials, reservable community and study rooms, and a vibrant children's area with outdoor seating. Teens will have their own dedicated space, and adults can relax in a cozy lounge complete with a fireplace.

The library, which shares its space with a charming coffee shop and is situated near the future amphitheater, is designed to foster both learning and leisure. This project was made possible with the help of Brighton's land contribution and design & build expertise.

So|me Amphitheater



Get ready for an exciting new addition to our community! Set to commence development in 2025, the SO|ME Amphitheater will provide a beautiful and functional outdoor venue for performances and events, elevating our community's cultural offerings, and creating a vibrant hub for live entertainment. Imagine enjoying memorable evenings under the stars and connecting with neighbors in this state-of-the-art amphitheater space. We're thrilled about the future and can't wait to share more as we get closer to bringing this incredible vision to life.!

Discovery Park



[Discovery Park](#) is an adventure-filled destination that is located in between multiple Pinnacle phases (phases 1, 3, 6, & 7) , offering amenities such as a bike park and pump track, dual zip lines, a sand and water play area, and a climbing wall. It's a fantastic spot for families and individuals to enjoy outdoor activities and make lasting memories.

MEET THE PINNACLE TEAM

From construction to new home sales to community lifestyle and HOA management- Brighton excels at it all! From day 1 to day 1,000 and beyond, Brighton is dedicated to Creating Great Places and building community. Learn more about the Pinnacle team, dedicated to you!



Janita McWhite - Pinnacle's New Home Specialist

Janita's expertise in finding the perfect fit for each buyer ensures that you purchase a home tailored to your needs and desires. Her dedication and personalized approach make the home-buying experience smooth and enjoyable for all our new residents. You can catch Janita at the Pinnacle Model Home at 6612 S Zenith Ave,

Tuesday - Thursday: 1PM - 5PM

Friday: 11AM - 5 PM

Saturday: 10AM - 5PM

Sunday & Monday: Closed



Lauren Brown - Lifestyle Program Director

Lauren brings homeowners' ideas to life, so you can relax and enjoy a vibrant, connected community. Lauren keeps a busy schedule packed with events and activities, including the popular SO|ME Market. Ever heard of it? This fantastic market, along with other exclusive

events just for Pinnacle residents, is what makes Pinnacle such an exceptional lifestyle community. Thanks to Lauren, there's always something exciting happening for you to enjoy!



Ann Marie Baird - Director of Pinnacle's Association Management

Ann Marie ensures Pinnacle is in top shape, creating a beautiful environment to call home, and everything running smoothly for all Pinnacle residents. Her efforts help maintain the beauty and functionality of our community, so you can take pride in where you live and enjoy the amenities to the fullest.

There's something for everyone in Pinnacle. Explore the available homes and become part of this exciting community today by checking our page dedicated to [Pinnacle](#).



2025 TREASURE VALLEY GUIDE

Finding Your Perfect Home

[VIEW IT HERE](#)

❖ BRIGHTON