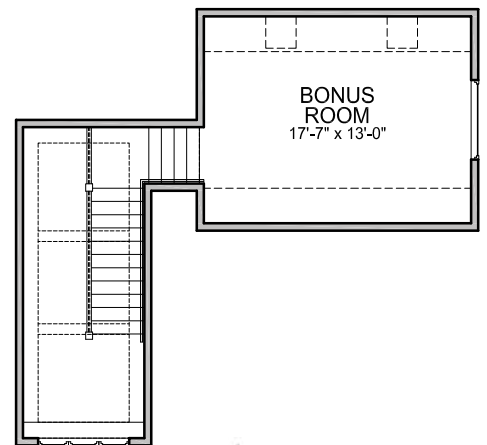
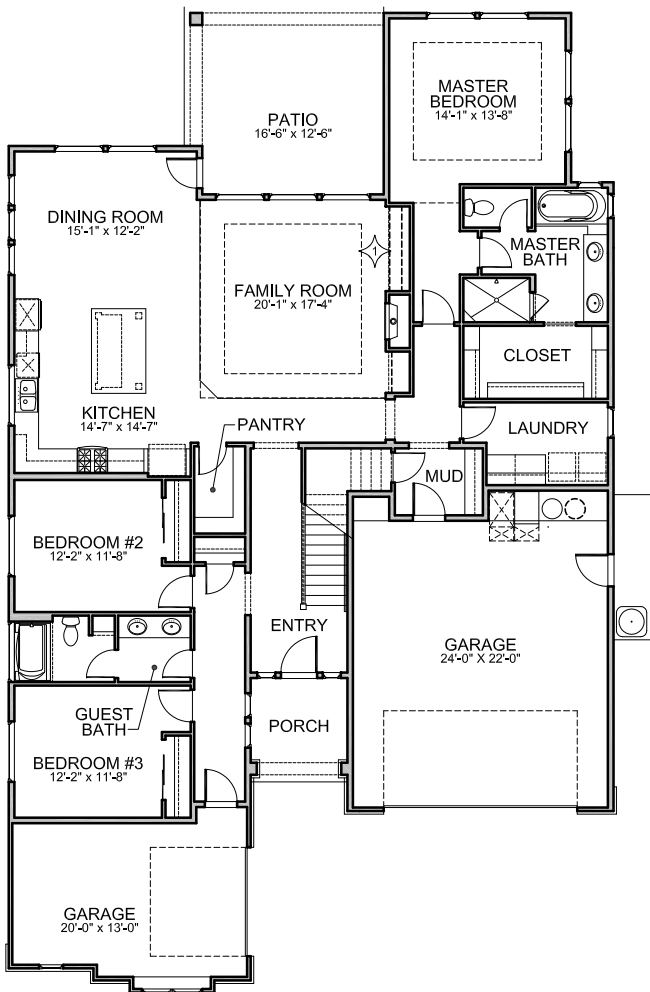




Levels:	single + bonus
Bedrooms:	3
Baths:	2
Garage:	3
ASF:	2,515
HERS:	67

**The Chestnut** by Brighton Homes. Bonus room upstairs, walk in pantry, covered back patio - plenty of room to entertain in this house! This efficiently designed floor plan is great for a growing family. This home features stainless Bosch kitchen appliances and Kohler throughout - a Brighton standard! Visit [BrightonHomesIdaho.com](http://BrightonHomesIdaho.com)!



❖ Indicates a plan option not included in the base price.



Disclaimer: Actual models may differ from the images shown here. Optional items not included in base price may be shown. Speak with a Brighton Homes representative for additional information. Areas and dimensions are approximate.  
 © Brighton Homes Idaho 2016. RCE-34595/41102 10/26/17