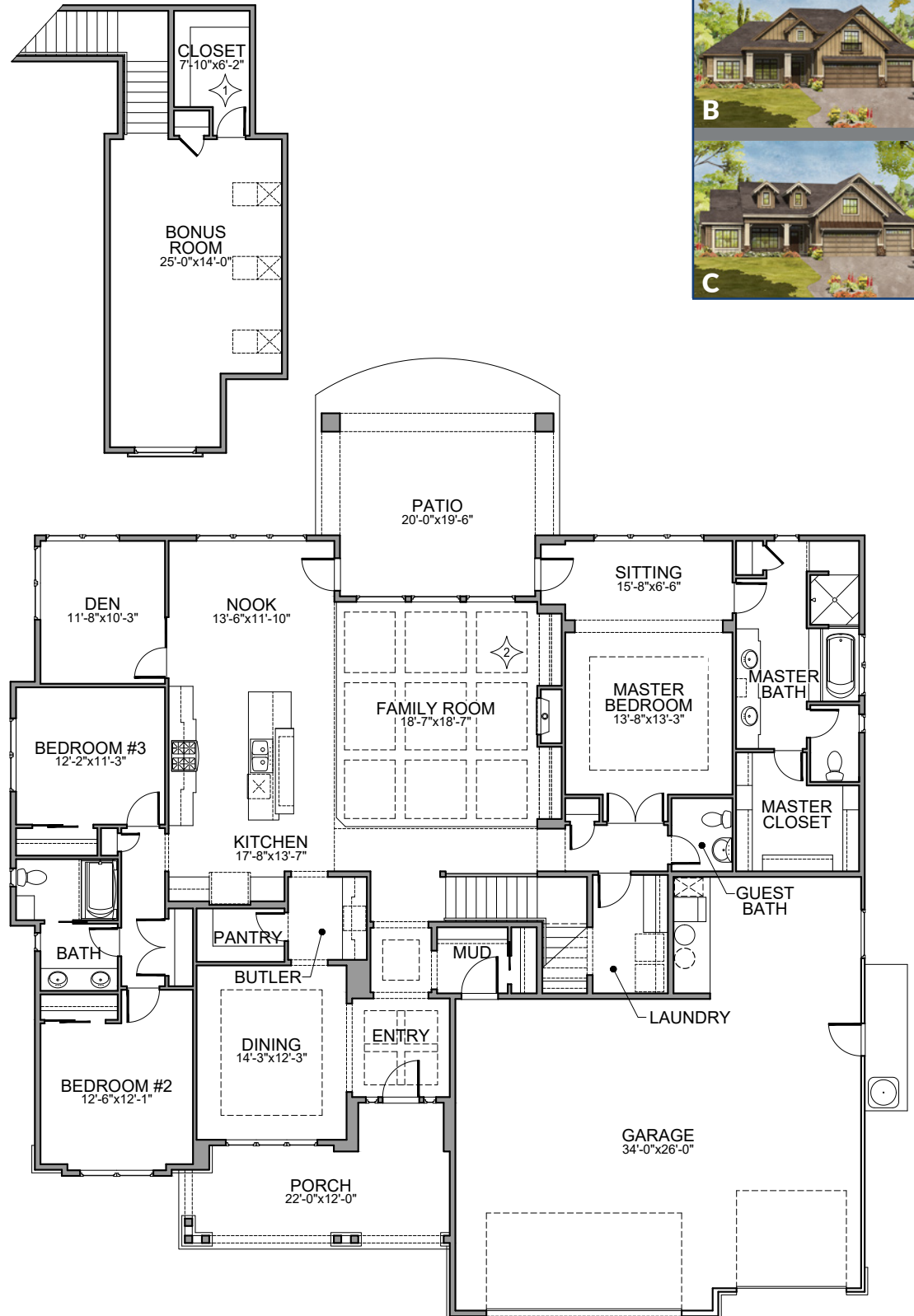




Levels: Single + Bonus  
 Bedrooms: 3+Den+Bonus+Dining  
 Baths: 2.5  
 Garage: 3 Car  
 ASF: 3,235  
 HERS: TBD

Rendering shown is Elevation A

The Trailcreek by Brighton Homes. When classic design meets superior workmanship, the result is a luxurious and relaxing home. The Trailcreek, a Parade of Homes design, includes a great room with coffered ceiling, open to the inviting kitchen with Bosch appliances and a butlers pantry. Master suite includes a sitting room and spa-like bath. You'll find Kohler throughout, a Brighton standard. This home is 100% Energy Star Certified. Like what you see? Visit our website to view all available homes, floor plan options and communities at [BrightonHomesIdaho.com](http://BrightonHomesIdaho.com).



◆ Indicates a plan option not included in the base price.

