

Places for living



CARTWRIGHT RANCH at Hidden Springs is a charming community that offers exquisite homes in Boise Idaho and allows homeowners to enjoy Idaho retreat-style living with a permanent address. Our unique community nestled in the Boise foothills next to Hidden Springs with breathtaking views of the Dry Creek Valley. Cartwright Ranch was creatively designed to incorporate a small town nostalgic feel with the Dry Creek Mercantile, restaurants, shops and businesses.

While living the Cartwright Ranch lifestyle, our homeowners enjoy Hidden Springs community amenities, such as pristine pools, clubhouse and fitness facility. The picturesque environment offers over 810 acres of open space with access to trails for hiking and biking. From top ranked schools for active families to laid back lifestyle for empty nest-ers, no other community has so much to offer.



Places for fun



What more can you ask for when looking for a charming community that offers the best Northwest Boise has to offer? Cartwright Ranch encompasses all the qualities of a neighborhood built for your active lifestyle.



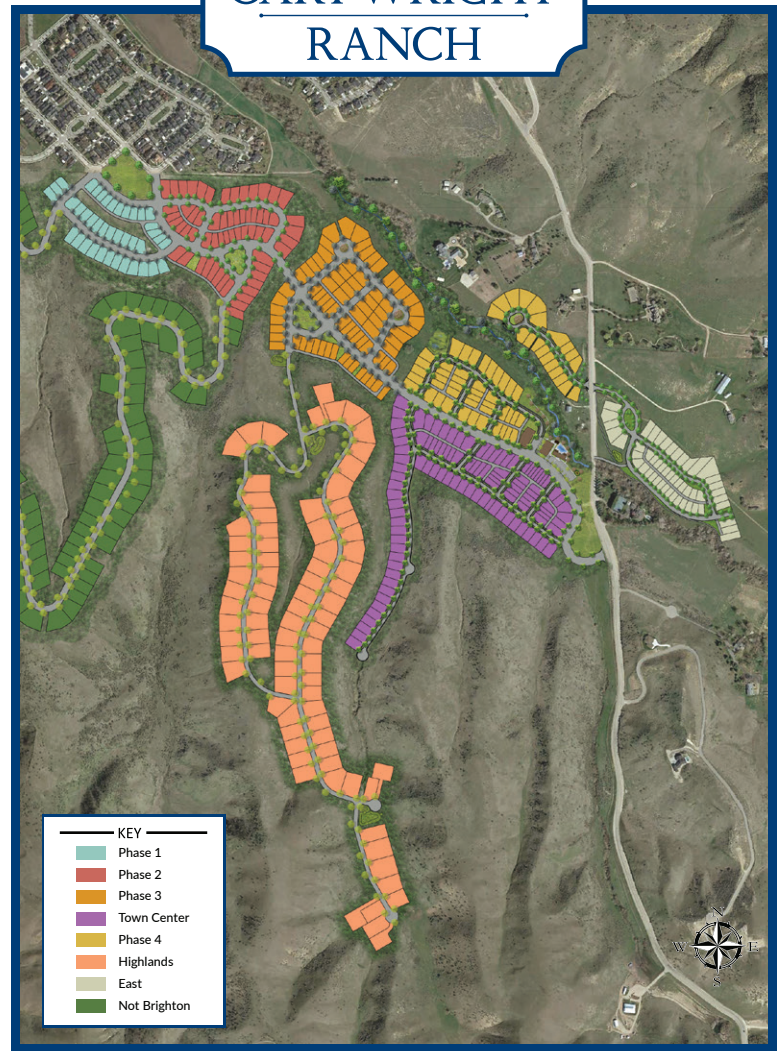
Places for learning

HIDDEN SPRINGS ELEMENTARY is located inside the community, making your child's commute safe, quick, and fun! A part of the Boise School District, Hidden Springs Elementary is dedicated to providing children the absolute best in academic, social, and civic opportunities.



SMART START PRESCHOOL is integrated into the community, and instills a love of learning in their students.

CARTWRIGHT RANCH



© Brighton Corporation 2022. Brighton reserves the right to make changes or modifications to any plans, specifications, materials, features and colors without notice. Plans, landscaping and interior or exterior renderings are artist's conceptions, are not to scale, and may not accurately depict the buildings or other structures, the homes or lots as they are built. Landscaping, fencing, and other amenities are for display purposes only. This brochure is for illustrative purposes only and is not a part of a legal contract.

Now Selling!



THE Highlands

Live an active life!

At Cartwright Ranch, you will have access to your community pool, pool house, gym and workout room. Stay active indoors and outdoors in this community!



Welcome to Cartwright Ranch!



Cartwright Ranch is the new home neighborhood in Northwest Boise, Idaho, that allows you and your family to retreat from the busy lifestyle. All while enjoying the sought after conveniences and amenities close to your home. Cartwright Ranch at Hidden Springs is a premier master planned community offering spacious homes just north of Boise, Idaho, nestled in the scenic Boise foothills. Cartwright Ranch offers a picturesque rural environment, with ample open space and trails held in conservation and dedicated to the residents use. Cartwright Ranch has recreational, educational and retail amenities all within the Hidden Springs community.

Here residents can enjoy active, outdoor living just outside your front door. You are certain to find the lifestyle you'll love living and in a quality home you'll love living in. Your next new home is in Cartwright Ranch! It is close enough to everything, yet still removed from the hustle and bustle of life.



VISIT OUR MODEL HOME TODAY!
3108 W Hidden Springs Drive
Boise, ID 83714

MODEL HOURS:
By Appointment Only
&
Self-Guided Tours Daily from 8am-8pm



Jamie Wright
208.917.4870
jawright@brightoncorp.com
Fathom Realty

VISIT OUR WEBSITE
BrightonHomes-Idaho.com

FOLLOW US



CARTWRIGHT RANCH

